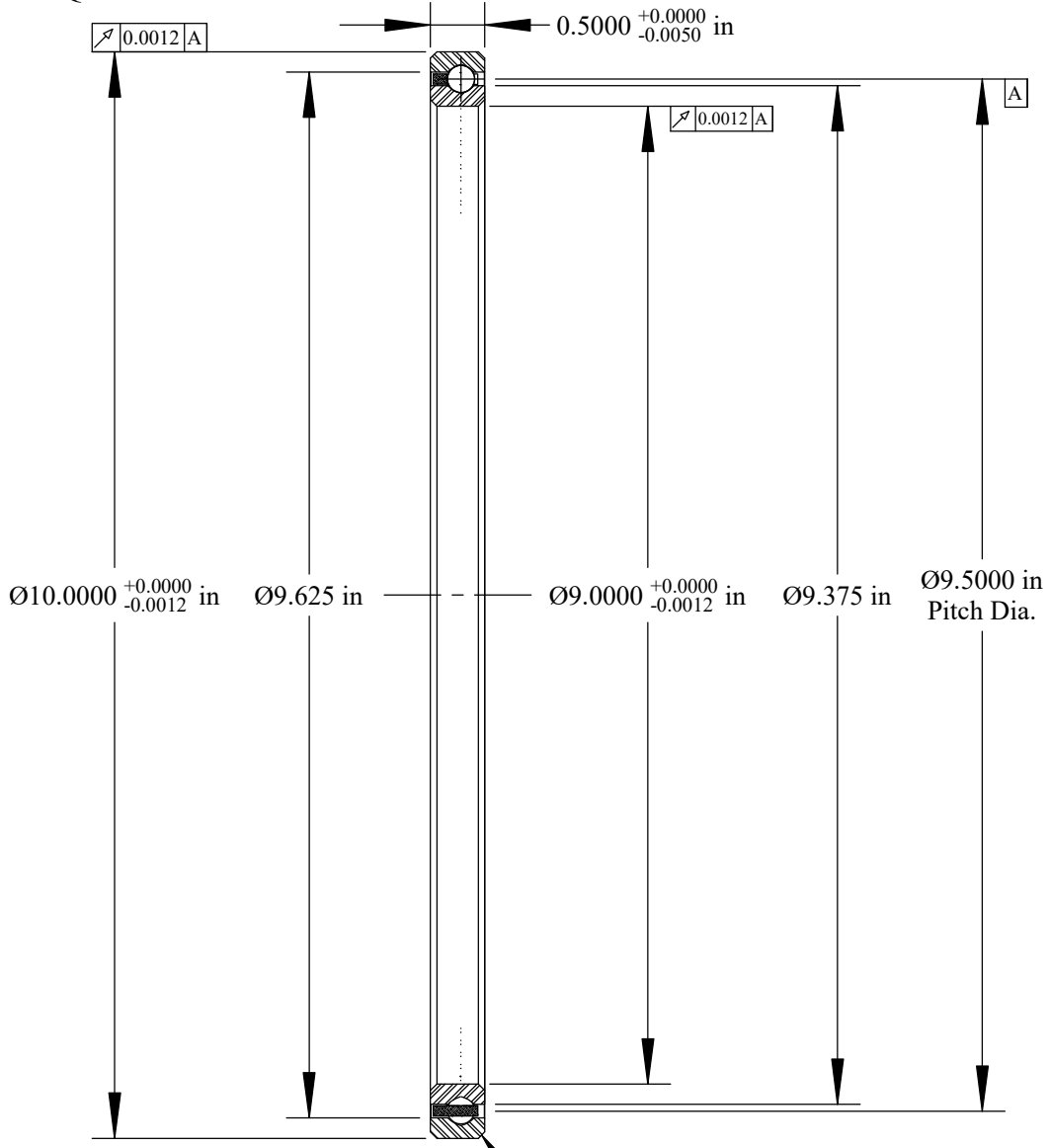
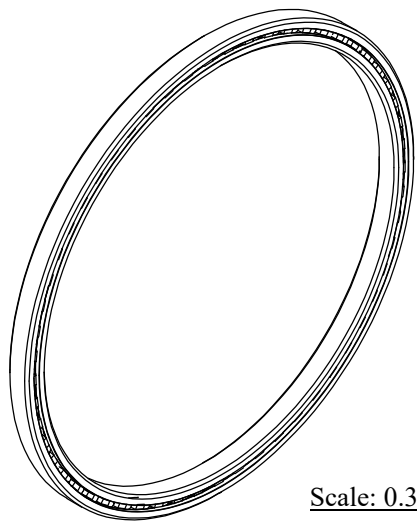


Cage Code: 704Q7

RevNo	Revision note	Date	Signature	Checked
-------	---------------	------	-----------	---------



Scale: 0.6:1
 Will Clear 0.060
 Max. Fillet Radius
 4 Exterior Corners



Scale: 0.3:1

	OUTER	INNER	SEPARATOR	BALL
MATERIAL	52100	52100	BRASS	52100
HARDNESS	Rc 59-62	Rc 59-62		
RACE RUN-OUT	OUTER	INNER		
ABEC RATING	PRELOAD		ROLLING ELEMENT	
1	N/A		QUANTITY	SIZE
			57	1/4
RADIAL LOAD	THRUST LOAD		MOMENT LOAD	
DYNAMIC: 3561 Lbs. STATIC: 6500 Lbs.	DYNAMIC: 5790 Lbs. STATIC: 16,250 Lbs.		DYNAMIC: 12,693 Lbs.-in. STATIC: 30,870 Lbs.-in.	
RADIAL PLAY	CONTACT ANGLE		LIMITING SPEED	
0.0024 0.0034	N/A		390 RPM	
LUBRICATION	SEAL		BEARING WEIGHT	
LIGHT OIL PRESERVATIVE	N/A		1.72 Lbs.	

UNLESS OTHERWISE SPECIFIED ALL DIMENSIONS IN INCHES

Corporate Headquarters
 15151 Prater Drive
 Covington, GA 30014
 (800) 431-1980
 www.ritbearing.com

Designed by ML	Checked by ML	This drawing and the information contained herein are proprietary and the property of Ritbearing Corporation.	
RD090XP0		Four Point Contact Thin Section Ball Bearing	
File name RD090XP0	Date March 17, 2020	REVISION A	Sheet 1 of 1