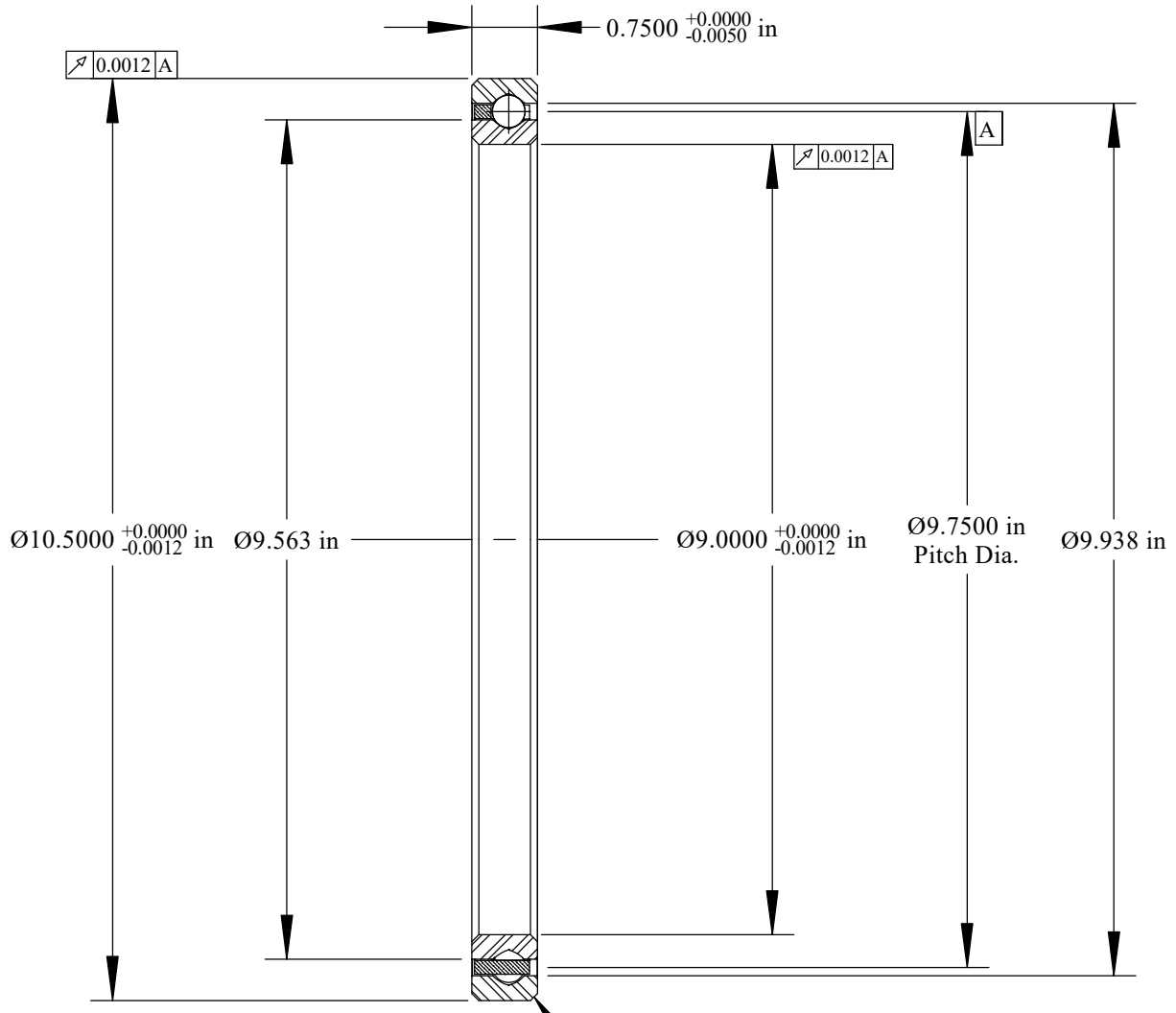
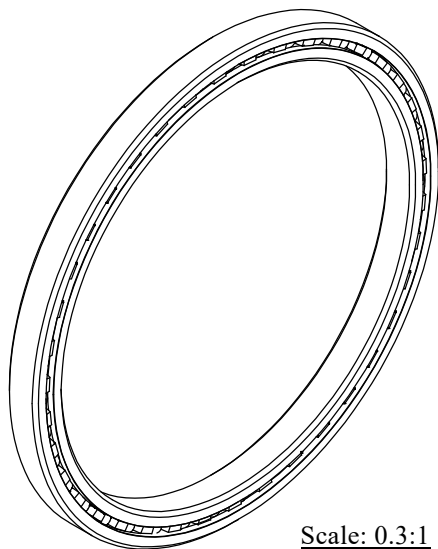


Cage Code: 704Q7

RevNo	Revision note	Date	Signature	Checked
-------	---------------	------	-----------	---------



Scale: 0.5:1
 Will Clear 0.080
 Max. Fillet Radius
 4 Exterior Corners



Scale: 0.3:1

	OUTER	INNER	SEPARATOR	BALL
MATERIAL	52100	52100	BRASS	52100
HARDNESS	Rc 59-62	Rc 59-62		
RACE RUN-OUT	OUTER	INNER		
ABEC RATING	PRELOAD		ROLLING ELEMENT	
1	N/A		QUANTITY	SIZE
			39	3/8
RADIAL LOAD	THRUST LOAD		MOMENT LOAD	
DYNAMIC: 6947 Lbs. STATIC: 11000 Lbs.	DYNAMIC: 11,030 Lbs. STATIC: 27,510 Lbs.		DYNAMIC: 25,410 in.-Lbs. STATIC: 53,640 in.-Lbs.	
RADIAL PLAY	CONTACT ANGLE		LIMITING SPEED	
0.0024 0.0034	N/A		388 RPM	
LUBRICATION	SEAL		BEARING WEIGHT	
LIGHT OIL PRESERVATIVE	N/A		3.90 Lbs.	

UNLESS OTHERWISE SPECIFIED ALL DIMENSIONS IN INCHES

Corporate Headquarters
15151 Prater Drive
Covington, GA 30014
(800) 431-1980
www.ritbearing.com

Designed by ML	Checked by ML	This drawing and the information contained herein are proprietary and the property of Ritbearing Corporation.	
RF090XP0		4 Point Contact Thin Section Ball Bearing	
File name RF090XP0	Date September 7, 2017	REVISION A	Sheet 1 of 1